

Clapton Square, E5

£650,000 Leasehold

2 Bedroom Apartment

711 sq ft (approx)

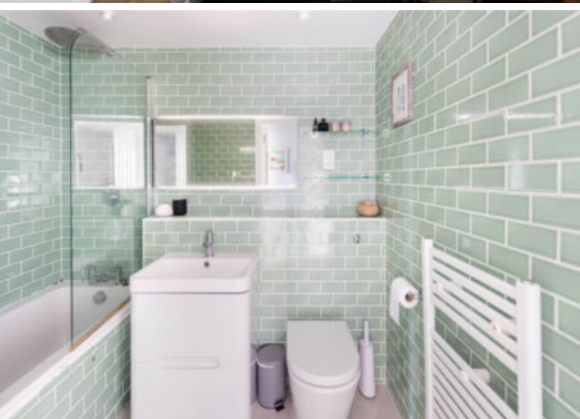
Key Features

- Fantastic location
- Striking modern designs
- Magnificent views overlooking Clapton Square
- Exceptional ceiling heights and sash windows
- Security entrance and secure bike storage
- Close to Hackney Central overground station

Property Description

This exquisite apartment occupies part of the second floor of this imposing purpose-built block of flats, enjoying glorious leafy green park views, adjacent to Clapton Square. Offering elegant proportions, high ceilings, bathed in natural light, sumptuous oak flooring and with extensive storage. Composed of an inviting reception hall, a glorious living/entertaining space overlooking Clapton Square, opening to a fantastic integrated fitted kitchen with a central

workstation. Super-sized principal bedroom with built-in wardrobes and a chic en suite shower room, a second bright double bedroom and a stylish bathroom. Peacefully appointed in this no through road, moments from a host of transport links into the City and West End and vibrant amenities on Lower Clapton Road, Chatsworth Road and Mare Street. Close to Hackney Downs Park.



Floorplan

CLAPTON SQUARE E5

Approximate Gross Internal Area
66.06 m² / 711.06 sq^{ft}



SECOND FLOOR

Council Tax Band: D

Energy Rating



Hackney Office

336 Mare Street, Hackney, London, E8 1HA
020 8525 7788 hackney@keatons.com



Every attempt has been made to ensure accuracy, however all measurements are approximate and for illustrative purpose only. In accordance with The Consumer Protection from Unfair Trading Regulations the following particulars have been prepared in good faith and they are not intended to constitute part of an offer or contract. We have not carried out a structural survey and the services, appliances and specific fittings have not been tested. All photographs, measurements floor plans and distances referred to are given as a guide only and should not be relied upon for the purchase of carpets or any other fixtures or fittings. Lease details, service charges and ground rent (where applicable) are given as a guide only.