

## Roseberry Place, E8

**£625,000** Leasehold

### 2 Bedroom Flat

767 sq ft (approx)

#### Key Features

- On-Site Concierge & Lift
- Residents Gym & Bicycle Storage
- Two Double Bedrooms
- Two Bathrooms
- South Facing Full Width Balcony
- Offered with No Forward Chain

### Property Description

Enviably appointed on the second floor of this iconic modern development, benefiting from a concierge, a passenger lift, residents' gym and a large community roof garden. Enjoying far-reaching views, with a full-width south facing private balcony. Wonderfully bright with large-sized rooms and a generous hallway with storage. Modern fitted kitchen with integrated appliances open plan to a delightful living/entertaining space with double sliding doors leading onto a private decked balcony.

Principal bedroom with en-suite shower room, a further double bedroom with fitted wardrobes and a chic bathroom. In the heart of Dalston Square, moments from Dalston Junction and Dalston-Kingsland overground stations, and a host of vibrant amenities. Offered with no forward chain.

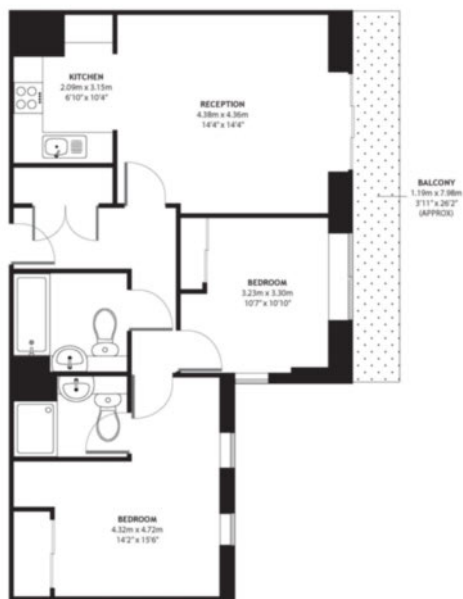
Further Material Information available, please request from relevant branch.



## Floorplan

### DALSTON SQUARE E8

Approximate Gross Internal Area  
71.33 m<sup>2</sup> / 767.78 sq<sup>ft</sup>



SECOND FLOOR

## Council Tax Band: D

## Energy Rating



## Hackney Office

336 Mare Street, Hackney, London, E8 1HA  
020 8525 7788 [hackney@keatons.com](mailto:hackney@keatons.com)



Every attempt has been made to ensure accuracy, however all measurements are approximate and for illustrative purpose only. In accordance with The Consumer Protection from Unfair Trading Regulations the following particulars have been prepared in good faith and they are not intended to constitute part of an offer or contract. We have not carried out a structural survey and the services, appliances and specific fittings have not been tested. All photographs, measurements floor plans and distances referred to are given as a guide only and should not be relied upon for the purchase of carpets or any other fixtures or fittings. Lease details, service charges and ground rent (where applicable) are given as a guide only.