

## Elderfield Road, E5

**£1,000,000** Freehold

### 3 Bedroom House

1569 sq ft (approx)

#### Key Features

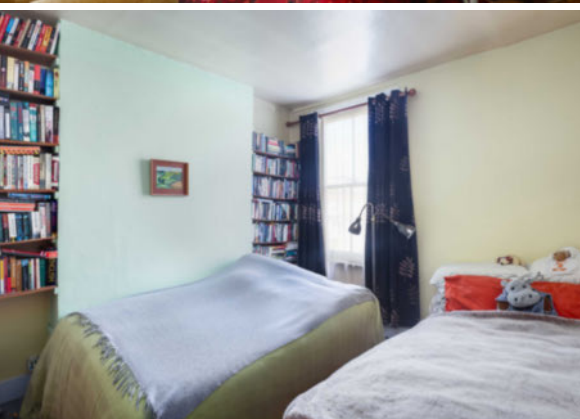
- High Potential
- Outstanding Primary & Secondary Schools
- Moments from Chatsworth Road
- Homerton & Hackney Central Overground Stations
- Offered with No On-Going Chain

### Property Description

This enchanting end-of-terrace Victorian house, offers elegantly proportioned accommodation arranged over two/three storeys. Offering huge potential to up-grade and extend subject to usual planning consent, with two invaluable basement rooms. Composed of an inviting reception hall, a dual aspect living/entertaining space, a fitted kitchen/diner with direct access to a mature secluded tranquil courtyard style garden and off-street parking if required. A ground floor

bathroom and separate W.C., two basement rooms currently for storage and three double bedrooms. Peacefully located close to vibrant Chatsworth and Lower Clapton Roads, the leafy green spaces of Millfield's Park and the Marshes, transport links including Homerton and Hackney Central Overground stations giving swift City access. Offered with no forward chain.





## Floorplan

### ELDERFIELD ROAD E5

Approximate Gross Internal Area  
145.78 m<sup>2</sup> / 1569.18 sq<sup>ft</sup>



## Council Tax Band: D

## Energy Rating



## Hackney Office

336 Mare Street, Hackney, London, E8 1HA  
020 8525 7788 hackney@keatons.com



Every attempt has been made to ensure accuracy, however all measurements are approximate and for illustrative purpose only. In accordance with The Consumer Protection from Unfair Trading Regulations the following particulars have been prepared in good faith and they are not intended to constitute part of an offer or contract. We have not carried out a structural survey and the services, appliances and specific fittings have not been tested. All photographs, measurements floor plans and distances referred to are given as a guide only and should not be relied upon for the purchase of carpets or any other fixtures or fittings. Lease details, service charges and ground rent (where applicable) are given as a guide only.